

SHAKERS REVIEW

OFFICIAL MATCH PROGRAMME



Canon



SWINDON TOWN

Canon League Division Four

Saturday, 12th May, 1984

Kick-off 3.15 p.m.

Vol. 84
No. 27

**Price
40p**





THE HIGHEST QUALITY FROM OUR OWN
LOCAL FACTORY

- ★ Aluminium Satin Anodised.
- ★ White Aluminium.
- ★ Thermal break system to combat condensation.
- ★ Beautiful Mahogany Hardwood.
- ★ UPVC Plastic, tilt and turn.
- ★ Traditional Leaded or Georgian.

ACTUAL FULL SIZE WINDOWS IN ALL MATERIALS HAVE BEEN BUILT IN OUR SHOWROOM FOR YOUR INSPECTION. OUR REPUTATION IS YOUR SAFEGUARD AND OUR MANY EXISTING CLIENTS AND INSTALLATIONS ARE AVAILABLE FOR INSPECTION.

CALL IN, OR TELEPHONE OUR SHOWROOM NOW FOR FURTHER DETAILS

Executive Window Co.

61 CROSTONS ROAD, BURY. TEL: 061-797 5799

OPENING HOURS: Mon., Tues., Wed., Fri. and Sat. 9am-5pm. Thurs., 9am-5pm. Sun., 10am-4pm.

wyndale
LIFE & PENSION CONSULTANTS

**Registered Insurance
Brokers**



**Contact us for all your
insurance requirements**



**Mortgages and personal
finance arranged**

Agents for

**National &
Provincial**
Building Society

21 Market Street
Tottington
Bury
Tel: Tottington 6141



WESTBURY

BUILDERS & PLUMBERS MERCHANTS LTD.

always at your service

**EVERYTHING FOR THE
TRADE & D.I.Y.**

**LIVESEY STREET MILL
CROSTONS ROAD
BURY**

Tel: 061-797 5044



**BURY
FOOTBALL
CLUB
CO. LTD.**

**Gigg Lane, Bury, Lancs.
Tel: 061-764 4881/2**

OFFICIALS – 1983/4

President:

Major G. B. Horridge, T.D.

Directors:

T. Robinson (Chairman)
Canon J. R. Smith, M.A.
(Vice-Chairman)
Mrs. A. Allen
G. Black
R. A. Clarke, B.Sc., F.I.O.B.
A. Metcalfe
I. J. Pickup, LL.B.

Secretary:

John Heap

Player Manager:

Martin Dobson

Assistant Manager:

Wulf McGuinness

Chief Coach:

Frank Casper

Commercial Manager:

Gordon Harrison

Promotions Manager Coach:

Ray Pointer

Social Club Manager:

Ian Fitzsimmons

Groundsman:

Rodney Lester

Hon. Medical Adviser:

Dr. K. K. Thaker, M.B.B.S.,
M.D., D.G.O., D.R.C.O.G.

Hon. Orth. Surgeon:

Mr. J. F. Stone,
F.R.C.S., F.R.S.C.E.

Public Address:

Pino Liotti

Programme Team:

Editor:

Peter Cullen

Contributors:

Tony Cunningham
Andy White

The opinions expressed in this programme are those of the contributors and do not necessarily reflect the views of the Management and Board of Directors of Bury F.C.

Chairman's Comments

Today we welcome Swindon Town to Gigg Lane for the last match of the season. Their manager is an ex-Bury favourite in his first such position and we wish Ken Beamish all success in his new career.

This season has turned out to be disappointing for all concerned with the club and our league position and crowd support has shown that Bury supporters will not watch a team that is not successful or involved in either promotion or relegation. The consequence of shortage of income through the gates has meant even after banking part of Paul Hilton's transfer fee, that we have had to negotiate a loan off the Bury Council to continue during the Summer months. The estimated income for this season was based on 3,000 spectators per game on average and we have achieved around only 2,000. The Board of the club has to decide on a budget for the coming season and the level of total wages for the playing staff. If we put out a team within the figure of this season's attendances, the standard of football will be unacceptable to our supporters.

We must therefore, budget again on 3,000 and gamble on our ability to attract back the missing spectators. The Board will do all within its power to generate cash in to the club and are negotiating for further assistance from the Council by the means of a mortgage. We feel that it is important that we keep league football at Gigg Lane and we can only do it with your assistance. The message is forgive past mistakes, forget this season's results and help us with your support both on and off the field, to forge a successful club and a winning team.

We have already introduced new faces at managerial level and re-introduced a youth orientated second team. These and future measures should see us back in the groove in 1984/85 season.

TERRY ROBINSON
Chairman



Match Ball Sponsors . . .

ROCHDALE
BRISTOL CITY
BLACKPOOL
WIGAN ATHLETIC
HALIFAX TOWN
PETERBOROUGH UNITED
MANSFIELD TOWN
WREXHAM
STOCKPORT COUNTY
CREWE ALEXANDRA
READING
ROCHDALE
YORK CITY
TRANMERE ROVERS
ALDERSHOT
DONCASTER ROVERS
HARTLEPOOL UNITED
COLCHESTER UNITED
TORQUAY UNITED

HEREFORD UNITED
DARLINGTON
CHESTER CITY
CHESTERFIELD
NORTHAMPTON TOWN
SWINDON TOWN
WEST HAM UNITED

BURY F.C. SUPPORTERS ASSOCIATION – Travel Section
PETS & SPORT, 51-53 BRIDGE STREET, RAMSBOTTOM
NEIL SWIFT, ROACH HOTEL, ROCHDALE ROAD, BURY
BURY F.C. SUPPORTERS ASSOCIATION
KEITH APPLEBY, THE FUSILIER, RAMSBOTTOM
HOLDER CONSULTANTS
J. R. CROMPTON plc, ELTON PAPER MILLS, BURY
RAY COLINGE, OLD DUN HORSE, RAMSBOTTOM
GEORGE HAMSTEAD, THE ANGLING CENTRE, BURY
CAROL WILLIAMS, SCHOOL OF DANCING, RAMSBOTTOM
MARTIN RADCLIFFE, SEA ROAD NORTH, BRIDPORT
JIM MORGAN, WATERLOO HOTEL, RAMSBOTTOM
HOLGATE, FISHWICK & LEATHER, JOHN STREET, BURY
C.V.S. GARAGE, CROSTONS ROAD, BURY
J. WILDE, ESQ., M.B.E., 297 GARSTANG ROAD, PRESTON
EDWARD W. ANDREWS, WALSHAW ROAD, BURY
ALISTAIR BURT, M.P.
MILLIKEN INDUSTRIALS LIMITED
JEFF WHITEHEAD, H.G.V. DRIVER TRAINING, 68 NORDEN ROAD,
BAMFORD, ROCHDALE
GORDON HARRISON, HAMERS ARMS, SUMMERSEAT
MILLIKEN INDUSTRIALS LIMITED
DONALD MacPHERSON, RADCLIFFE ROAD, BURY
MILLIKEN INDUSTRIALS LIMITED
MILLIKEN INDUSTRIALS LIMITED
ASHWORTH BUILDING SERVICES, 220 ST. GEORGES ROAD, BOLTON
ASSOCIATED FRESH FOODS, ACCRINGTON

*Front Cover Photos: Player of the Season Joe Jakub and runner-up Winston White.
Courtesy of Bolton Evening News.*

TONY'S TOPICS . . .

THE SEASON'S REVIEW – Part One

Bouquets to:-

Joe Fagan for restoring the human touch to Liverpool after the 'old moaner' Paisley. Manchester United for their refreshing approach and serious challenge to Liverpool. Wimbledon for managing so much success on such small gates. York City for setting the Fourth Division alight and creating a new league points record. Bradford City, who must be cursing their wicked start to the season, as their record in the last three-quarters has been phenomenal – and largely ignored. The British clubs whose performances in Europe have been outstanding. Ian Rush, probably the best goalscorer since Jimmy Greaves.

Brickbats to:-

Robert Maxwell for displaying a sincerity rating level with Mickey Mouse. U.E.F.A. for yet more ludicrous decisions. Chelsea Chairman Ken Bates for his ostrich like approach to the club's morons. Q.P.R. for their reluctance to criticise their joke of a playing surface. The Aston Villa board for continually creating unwarranted pressure for Manager Tony Barton. The England players for consistently letting down one of soccer's more likeable characters, Bobby Robson.

Glad To See:-

Sheffield Wednesday back in their rightful place after 14 years, and done so unassumingly with a lack of big names, thanks to previously unsung Howard Wilkinson. Watford continue to thrive on the Elton John/Graham

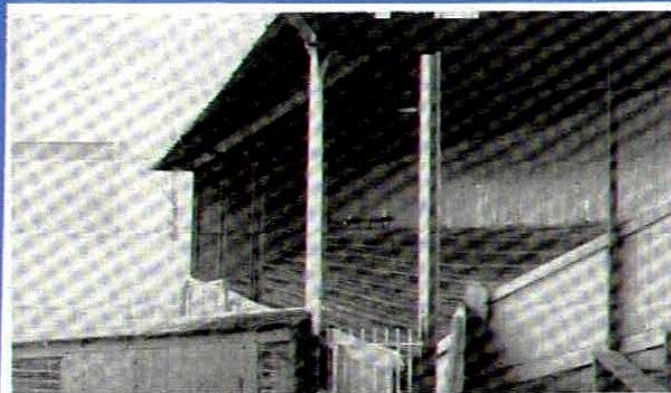
Taylor partnership. They are two of my favourite people in soccer, and despite the jealous snipes, may they long continue the success they've enjoyed at Vicarage Road. Grimsby and Carlisle for ensuring the Second Division promotion race continued right up until the last couple of games, and thanks for giving all the small clubs a glimmer of hope. Little Crewe Alexandra finally shrugging off the 'rubbing rag' tag.

Sad To See:-

The plight of two Welsh clubs, Swansea hopelessly in debt and 'doing a Northampton' after 6 glorious years; and Wrexham not long after being 'on the up' struggling also to survive after another disastrous plunge to the bottom of the league. Notts County finally losing their hard earned fairy tale First Division status. Ipswich Town apparently paying for the folly of a new stand. But who would have thought so when the stand was built?

My early season forecasts again wrong, although I did have some success, namely Manchester United, Newcastle, Chelsea, Oxford, Hull, Bristol City, York, Birmingham, Coventry, Swansea, Scunthorpe and Wrexham. However, my tips of Crystal Palace for promotion, Grimsby, Bradford City and Wimbledon for relegation and Aldershot for re-election, were hopelessly miscalculated!

And finally, Bury nowhere near the leading pack after a dismal season of upheaval. May it all be forgotten this time next year!



TONY'S TEASERS

1. WHO LIVES HERE?

Name the ground pictured and the team that plays there.

2. NAME THE TWO CLUBS:-

that have boosted our goal tally this season by scoring own goals for us.

3. WHAT WAS THE SCORE:-

when Bury played at Swindon earlier in the season, and who scored the goals for both sides?

4. FOR WHICH CLUBS:-

has Gary Buckley played – two in the League, one in non-league?

5. MATCH 'EM UP:-

- | | |
|----------------------|--------|
| 1. Bristol City | a. 2-2 |
| 2. Peterborough Utd. | b. 1-1 |
| 3. Tranmere Rovers | c. 2-1 |
| 4. Doncaster Rovers | d. 2-3 |
| 5. Crewe Alexandra | e. 0-0 |

5. UNJUMBLE THE LETTERS:

To find a current Bury player
NOT WITH WINES.

Answers on 'Gigg Lane Gleanings' page

From the Press Box . . .

THIS SEASON'S REVIEW – Part Two

Not much doubt about the bottom line. It's been a disaster. The season opened in August with much optimism and anticipation. Had we not been so unlucky just three months previously in failing so narrowly in our quest for Third Division soccer? Had the team not been strengthened by incoming players such as Pashley, Coleman, Entwistle, Carrodus and Spence? How could we fail? How? Miserably, thats how!

Early season form which saw us expectedly in the top four by November, had us in mid-table four weeks later. A sad transformation made worse by the fact that the 5-1 victory at Chesterfield towards the end of December lifted us temporarily to eighth, the highest position in the league that we were to occupy for the rest of the campaign. A steady decline on the field accompanied by a similar decline in number on the terraces eventually led to the dismissal after four years of Jim Iley, much to the relief of many supporters. The irony being, however, that when these fans got their wish, they too appeared to vanish! Perhaps the only ray of hope concerning Iley's departure comes from the fact that both Peterborough and Barnsley were promoted the year after he left. Could it be a hat-trick next year?!

The arrival of Martin Dobson to the hot seat has met with a bag of mixed fortune. An uncertain start, a healthy run, but a dismal run-in leaves the new boss with plenty to sort out during the close season.

On the cup front, the Lancs. Manx Cup again proved a useful warm-up with us once more contesting the final with Blackburn, only this time to lose on penalties.

The Milk Cup saw us overcome 3rd Division Wigan 2-1 away and 2-0 at home before the infamous tie with West Ham! The F.A. Cup began with an away trip to Boston where a comfortable 3-0 victory gave us the opportunity to avenge our disappointment of last term with a trip to Scunthorpe, the team that pipped us to promotion. Alas, revenge was not to be as the Irons put out the fire by beating us 2-0.

The Associate Members' Cup again saw us prove to be Wigan's bogey side as we beat them here at Gigg Lane before going down at Third Division high-flyers Hull City.

So generally Gigg Lane has been a disappointed and unhappy ground this season. So much to play for, so much to look forward to last August, but as we look back, so much for 1983/84!

Let us wish Martin, Frank and Wilf a busy close season. Let us hope 84/85 produces a much happier picture, and let us look to the Bury townsfolk for more support, which hopefully will be deserved.

As for this season, I've forgotten it already!

CLASSIC 1 & 2

MARKET ST.
BURY 4133

Take in a Film at the Classic

Details of Forthcoming Films in the local press

THE CLASSIC SUPPORTS BURY F.C.

Lottery Tickets on sale at the Classic kiosk

Open all ours for great mixers!

BEST WISHES
TO
BURY FOOTBALL CLUB

CAMBRIAN
soft drinks

PURE GOOD TASTE

CAMBRIAN SOFT DRINKS LIMITED – BOLTON 23251

MESSENGER NEWSPAPERS

Greater Manchester's
Biggest Group of
Weekly Newspapers

18 SILVER STREET, BURY
— 797 5600 —

READ THE PRESS REPORTS via DRURY'S NEWSAGENTS

34 Heap Bridge — Bury

*After an evening game you
can also dine next door at*

DRURY'S FISH AND CHIP SHOP

(only 150 yards from M66)



Book a table by ringing 764 3575

VIBES

Records & Tapes

PRINCESS PARADE BURY

Suppliers of all
records played at
Gigg Lane

the Cleaners

ALLENS DYERS (Bury) LTD.

Bury Times Building,
Market Street East,
Bury, Lancashire.

Telephone:
061-764
4090

Reg.
Office:
90 Rochdale
Road,
Bury.
Telephone:
061-764 2048

Contract &
Domestic Services
throughout
East Lancashire

the Cleaners

WHY HAVE A PACKAGING PROBLEM?



RING

The Bury Box Making Co. Ltd.

Manufacturers and Stockists of
Cardboard Boxes and Corrugated Cases

Prompt
Delivery

BADGER STREET — BURY
061-764 4502

SUPPORT LOCAL INDUSTRY

ELTONITE

BATTERY SHOP

Save £££s! Deal Direct!

Prices from £9.99!!!

FREE testing, fitting and
delivery.

Also
Alternators

11 Bolton Road, Bury.

Tel: 761 7234

Also at Rochdale



Warburtons Travel

Coach hire and holidays

Bury Interchange, Knowsley Street, Bury BL9 0SN. Tel: 061-761 5327



Warburtons Travel are
proud to have been
Coach Operators
for Bury F.C. Team and
Supporters' Club for over
22 seasons.

COME TO THE
EXPERTS FOR
YOUR TRAVEL
ARRANGEMENTS

MODERN LUXURY COACHES

For all types of private
hire and visits to theatres,
clubs, airports, weddings,
holidays and morning
drives.

Welcome . . .

SWINDON TOWN



We welcome the Swindon Town Players, Officials and Supporters to Gigg Lane this afternoon as the curtain comes down on another season for both clubs. In particular we welcome a familiar face in the Robin's Manager Ken Beamish. Now in his first managerial position, Ken spent just over 12 months at Gigg Lane back in the late '70's before a transfer to Tranmere Rovers in

November '79. Incidentally, Ken still remains along with his former striking partner at Gigg Lane, David Gregory as Bury's record signing at £30,000 – and I bet it is a while before we pay that sort of fee again!

Swindon who will be beginning their third successive season in Division Four next season, visit Gigg Lane today in 15th position with two points more to their credit than ourselves – so a Bury win today would leap-frog the Shakers over the visitors at the final count. Their away form this season has seen wins earned at Stockport, Chester, Hartlepool and most recently 3-0 at Wrexham with a further six points being earned from drawn games. Twelve games have ended in defeat away from the County Ground. Swindon finished in 8th position last season and so, like ourselves will this year be registering their lowest ever league placing. Again like ourselves, the crowds at the County Ground are down to rock bottom and although gates have averaged a respectable 3,018 over the season, a record low of 1,681 witnessed the Leigh Barnard goal which beat Darlington recently and two further gates of less than 2,000 have since been recorded.

We regret the lack of a team photograph of today's visitors. The end of season blues have either spread as far as the Royal Mail – or Swindon omitted to send one!



Joe Jakub's left foot volley troubles the Chesterfield defence.

SCOTT ENDERSBY (Goalkeeper). Former Ipswich apprentice who moved to Tranmere Rovers for whom he made his league debut against Hereford United. Spent two seasons between the posts for Tranmere before joining Swindon.

CHARLIE HENRY (Defender). Signed professional in February 1980 and made his league debut as substitute at Reading in September of that year. Most of his 93 league appearances to the end of last season have been at right full back.

COLIN BAILIE (Defender). Made his league debut at Oxford United in April 1982 and established himself in the first team last season.

PAUL BATTY (Midfield). Paul served his apprenticeship at Swindon and made his league debut against Crewe Alexandra. He went on to make 39 league appearances last season.

KEVIN BADDELEY (Defender). Served his apprenticeship with Bristol City and made his league debut against West Ham in August 1980. He established himself in Swindon's First Team shortly after his transfer in July 1981. Had made 65 league appearances to the end of last season.

MIKE GRAHAM (Defender). Mike began with Bolton Wanderers making his debut at Mansfield in March 1978. He made 46 appearances for Bolton before signing for Swindon in July 1981. Has made 76 league appearances for Swindon to the end of last season.

DAVE HOCKADAY (Forward). Dave's only previous club was Blackpool for whom he made his league debut in September 1976 at Notts County. He went on to make around 140 appearances for Blackpool before joining Swindon in the 1983 close season.

GARY EMMANUEL (Midfield). Gary began with Birmingham City making his debut at Stoke in January 1975. He played 71 First Division games for the Blues, moved to Bristol Rovers in December 1978 and added 65 league appearances there before his transfer to Swindon.

JIMMY QUINN (Forward). Signed from Oswestry Town in December 1981, he enjoyed a rapid rise from parks football to his league debut as substitute against Walsall in March 1982.

ALAN MAYES (Forward). Now in his second spell with Swindon, Alan began with Q.P.R. but his league debut came after a move to Watford. He made 133 league appearances for Watford plus 10 on loan to Northampton before signing for Swindon. Although at Swindon for less than two years, he made 89 league appearances and struck up a good partnership with Andy Rowland. He joined Chelsea in December 1980 and made about 70 league appearances for them before re-joining Swindon.

LEIGH BARNARD (Midfield). Served his apprenticeship with Portsmouth and after making his league debut against Exeter City in September 1977 went on to make 79 league appearances for Pompey. He also played 4 matches on loan to Peterborough but moved to Swindon in June 1982.

ANDY ROWLAND (Forward). Andy served his apprenticeship at Derby County but his league debut (which was actually at Swindon) came after a transfer to Bury in August 1974. He was three times leading scorer at Bury and played 174 league games for them before his transfer to Swindon in September 1978.

STANDATE CONSTRUCTION LTD. BUILDING CONTRACTORS

SPECIALISTS IN INDUSTRIAL AND DOMESTIC
BUILDING WITH PACKAGE PRICES.
DORMER ROOF CONVERSIONS
STRUCTURAL STEELWORK
FULL PLANNING AND DRAWING SERVICE
FOR ALL WORK

RAMSBOTTOM 2783
KAY BROW, RAMSBOTTOM, BURY

FOR HEALTH AND FITNESS

Riverside

HEALTH STUDIO

TAKING CARE OF YOUR HEALTH IS NOT
A SELF INDULGENT FAD
YOU ARE THE MOST IMPORTANT ASSET
YOU HAVE GOT.

**ILEX MILL, RAWTENSTALL,
ROSSENDALE. Telephone: 223424**

Central Heating FROM £745 GUARANTEED 5 YEARS!

- INDIVIDUALLY DESIGNED FUEL SAVER SYSTEMS
- GUARANTEED TEMPERATURES



- BOILER CHANGES · GAS · OIL · SOLID FUEL
- BATHROOMS · SHOWERS
- WATER HEATERS FITTED
- NO DEPOSIT FINANCE**

FOR **FREE** QUOTATION WITH NO OBLIGATION
TELEPHONE FOR FURTHER DETAILS:

061-766 2636 / 723 1124

538 MANCHESTER ROAD · BURY · LANCs.

SEASON 1922/1923

Facing a serious threat of closure during the summer – unable to pay the wages at one point, the Club was helped through the crisis by a donation from an anonymous gentleman. The Earl of Derby also helped the Shakers fulfill a long felt ambition by making a gift of the Gigg Lane ground to the Directors and so the Club owned the ground for the first time. The lack of funds meant that there had been no big splashes in the transfer market, but 14 new players had signed on and former Shakers defender John (J.H.) Thomson had been appointed Assistant Manager.

The major new introduction to the team was 'keeper William Richardson from Blackpool, and the first four months were spent climbing up to 2nd position. Norman Bullock hit 4 goals in the 5-1 victory over Clapton Orient and when he hit his 13th goal of the season, a winner against Rotherham, it made Bullock the leading scorer in Division Two and made Bury joint leaders. A promotion push had begun and to strengthen the squad, a large fee was paid to Preston for winger Peter Quinn.

Success in the F.A. Cup briefly interrupted the promotion chase. A 2-1 victory against Luton was followed by a second round 3-1 triumph over Stoke – and a new ground record crowd of 31,149 being in attendance. For the 3rd round tie against Southampton, the Directors made a very unpopular decision in doubling admission prices and there was a public refusal to pay the prices which resulted in a crowd of only 13,902 attending the 0-0 draw, Bury being beaten in a replay at The Dell by the only goal. The Directors had approved many ground improvements for the Southampton tie, £500 being spent on making the enclosures in front of the main stand and south stand along with the Cemetery end banking steeper – none of the ground was terraced at this time, just gravel banking. Behind each goal area was a crescent shaped semi-circular area and to accommodate more spectators these areas were removed. The Manchester Road end was also terraced for the first time – 14 steps high.

A bomb was dropped on 7th March when allegations were made that 2 games between Bury and Coventry in 1920 had been 'fixed' and that £750 had been paid to square the matches. An F.A. Committee was set up to investigate this serious claim. In late March, an extraordinary share-holders meeting was held and the entire Board of Directors removed 'in consequence of the continued dissension amongst the board'. A new board was appointed, with Herbert Duckworth named as Chairman. What an upheaval in the midst of a promotion push!

Norman Bullock had obviously made a great impression in his short career for he was picked to play for England on March 19th, scoring against Belgium at Highbury. Not surprisingly when April dawned, the club was in disarray and the team's form showing signs of faltering – a 5-2 home defeat by West Ham seeing Bury drop to 8th position. By May 5th, promotion had proved illusive and the team finished the season in 6th position beating Leicester in the last game – the visitors having needed just one point to earn a place in Division One.

In late May, the report of the bribery allegation was published – each Club was fined £100 and several people were suspended for life from taking part in football or football management. Among the Bury suspensions were J. W. Horrocks (Chairman), F. Read (Director), William Cameron (Manager) and players Jock Allan, Robert Perry, William Ritchie and Jack Goldie while Tom Cornthwaite was suspended for 12 months. On 11th June, despite 200 applications for Cameron's job, assistant J. H. Thomson was appointed Manager.

From the Archives . . .

SEASON 1922/23

1922				
Aug.	26	Hull City	H 1-0 Bullock	12,00
	28	Barnsley	A 1-2 Burkinshaw	9,000
Sept.	2	Hull City	A 2-2 Aitken, Bullock	10,000
	6	Barnsley	H 2-1 Bullock, Smith (pen)	9,000
	9	South Shields	A 2-0 Bullock, Robbie	12,000
	16	South Shields	H 1-0 Aitken	10,000
	23	Wolverhampton Wand.	A 1-1 Bullock	18,000
	30	Wolverhampton Wand.	H 3-0 Bullock, Smith (pen), Stage	12,000
Oct.	7	Coventry	A 0-3	20,000
	14	Coventry	H 1-1 Bullock	12,000
	21	Crystal Palace	H 2-1 Stage (2)	12,000
	28	Crystal Palace	A 1-1 Bullock	14,000
Nov.	4	Port Vale	A 0-2	8,000
	11	Port Vale	H 2-0 Robbie, Stage	11,000
	18	Manchester United	H 2-2 Aitken, Burkinshaw	22,400
	25	Manchester United	A 1-0 Stage	35,000
Dec.	2	Clapton Orient	H 5-1 Bullock (4), McCrae	10,000
	9	Clapton Orient	A 2-0 Burkinshaw, Stage	8,000
	16	Rotherham County	H 1-0 Bullock	12,000
	23	Rotherham County	A 0-0	12,000
	25	Leeds United	H 1-1 Robbie	22,000
	26	Leeds United	A 0-0	27,000
	30	Stockport County	H 2-0 Burkinshaw, Robbie	18,000
1923				
Jan.	6	Stockport County	A 0-1	20,000
	20	Sheffield Wednesday	A 0-2	20,000
	27	Sheffield Wednesday	H 4-0 Bullock (2), McCrae, Robbie	12,000
Feb.	10	Fulham	A 0-3	12,000
	14	Fulham	H 0-1	7,000
	17	Notts County	H 2-2 McCrae, Quinn	12,000
Mar.	3	Derby County	H 4-1 Bullock (3), Robbie	10,000
	17	Southampton	H 3-0 McCrae (2), Stage	12,000
	21	Notts County	A 0-1	10,000
	24	Southampton	A 0-0	12,000
	30	West Ham United	A 0-0	30,000
	31	Bradford City	A 0-4	15,000
Apr.	2	West Ham United	H 2-5 Bullock, Burkinshaw	25,000
	7	Bradford City	H 1-0 Bullock	9,000
	11	Derby County	A 0-1	4,000
	14	Blackpool	A 1-5 Bullock	12,000
	21	Blackpool	H 3-0 Brooks, Ogden, Woodhouse	9,000
	28	Leicester City	A 0-2	25,000
May	5	Leicester City	H 2-0 Bullock, Robbie	12,000

League Appearances (& Goals in brackets)

T. Adamson	38
J. Aitken	38 (3)
T. Bradshaw	5
G. Brooks	11 (1)
N. Bullock	40 (22)
R. Burkinshaw	32 (5)
J. Callagher	35
C. Cooke	1
T. Cornthwaite	2
W. Gorman	8
F. Heap	30
T. Hulley	3
W. Lomas	5
J. McCrae	25 (5)
R. Ogden	5 (1)
T. Partington	2
R. Perry	2
J. Porter	33
P. Quinn	6 (1)
W. Richardson	37
D. Robbie	42 (7)
F. Smith	14 (2)
W. Stage	40 (7)
J. Stevenson	2
S. Woodhouse	6 (1)

LEAGUE DIVISION TWO 1922/1923

	P	W	D	L	F	A	W	D	L	F	A	Pts.
Notts County ..	42	16	1	4	29	15	7	6	8	17	19	53
West Ham Utd.	42	9	8	4	21	11	11	3	7	42	27	51
Leicester City .	42	14	2	5	42	19	7	7	7	23	25	51
Manchester U.	42	10	6	5	25	17	7	8	6	26	19	48
Blackpool	42	12	4	5	37	14	6	7	8	23	29	47
Bury	42	14	5	2	41	16	4	6	11	14	30	47
Leeds United ..	42	11	8	2	26	10	7	3	11	17	26	47
Sheffield Wed.	42	14	3	4	36	16	3	9	9	18	31	46
Barnsley	42	12	4	5	42	21	5	7	9	20	30	45
Fulham	42	10	7	4	29	12	6	5	10	14	20	44
Southampton ..	42	10	5	6	28	21	4	9	8	12	19	42
Hull City	42	9	8	4	29	22	5	6	10	14	23	42
South Shields.	42	11	7	3	26	12	4	3	14	9	32	40
Derby County .	42	9	5	7	25	16	5	6	10	21	34	39
Bradford City ..	42	8	7	6	27	18	4	6	11	14	27	37
Crystal Palace	42	10	7	4	33	16	3	4	14	21	46	37
Port Vale	42	8	6	7	23	18	6	3	12	16	33	37
Coventry City..	42	12	2	7	35	21	3	5	13	11	42	37
Clapton Orient	42	9	6	6	26	17	3	6	12	14	33	36
Stockport Co. .	42	10	6	5	32	24	4	2	15	11	34	36
Rotherham Co.	42	10	7	4	30	19	3	2	16	14	44	35
Wolves	42	9	4	8	32	26	0	5	16	10	51	27

F.A. CUP

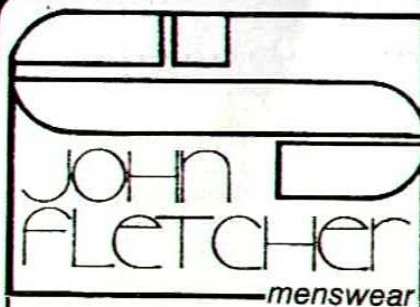
Rd. 1	H	Luton Town	2-1	16,327
Rd. 2	H	Stoke City	3-1	31,149
Rd. 3	H	Southampton	0-0	13,902
Rep.	A	Southampton	0-1	17,866

LANCASHIRE CUP

Rd. 1	A	Southport	0-4	7,000
-------	---	-----------	-----	-------

MANCHESTER CUP

Rd. 1	H	Eccles United	3-1	
Rd. 2	A	Hurst	0-1	



Be Smart and
Support The
Shakers

9 Union Street, Bury
Tel: 764-1032

D.I.Y. = RBH

Make a note to call
at

**RHODES BROTHERS
(HEYWOOD) LTD.**

Your Local D.I.Y. Centre
and Compare our
Permanent Low Prices

.....
GARDEN ST. HEYWOOD
Tel. 60000 and 68800



Bet with

**WALLY
WILSON**
**YOUR FRIENDLY
BOOKMAKER**

7 Silver Street, Bury

BRANCH OFFICES:
Bolton, Ramsbottom, Rawtenstall

★ Don't be sorry - Bet with Wally ★

BORNMORE (METALS) LTD.

ALUMINIUM
STAINLESS STEEL
BRASS, COPPER
AND BRONZE

UNIT 11
PORTLAND INDUSTRIAL
ESTATE
PORTLAND STREET, BURY
Telephone: 061-797 6955/6
761 7675



THE TRAFALGAR

MANCHESTER OLD ROAD,
BURY

MINE HOST:
FRED & IVY REYNOLDS

C.V.S. GARAGE

M.O.T.
Testing

Mechanical & Body Repairs
Servicing
Electronic Engine Tuning

▽
Crostons Road, Elton
opposite Tottington Road
Tel. 764 7333



mitre
Gives you an unfair
advantage

**T. & G. FOX
(Horticultural) LTD.,**
Grass Cutting Machinery Engineers.
Sportsground Maintenance
Contractors.

Spares — Sales — Service — Hire.

Maintenance and service in our well equipped
workshops.
Reconditioned equipment for sale.
Tractor service and repairs.
Delivery and collection service.

Let us quote you for aeration, subsoiling, seeding,
etc. of your Sportsground.
Enquiries welcome.



**HORSE SHOE FARM,
CASTLE HILL, BREDBURY.**
Tel: 061-2986-5828.

Programme Collectors—
Send today for our FREE Soccer Programme
Catalogue, listing thousands of programmes
Old and New.

Special Offer to all readers of
'Shakers Review'.

BUMPER BUNDLES
50 Mint Programmes, League, Cup,
Friendlies, etc. including P. & P.
ONLY £3.00

FREE! Wembley Programme
with every order.

DAVID CLARKE
(Soccer Programmes)

Dept. B83
67 Wallgate
Wigan. WN3 4EA

We also pay top prices for
old programme collections.

GIGG LANE ACTION

Top: Two profiles of the 'Boss' – Concentration (left) and Delight (right) during our recent encounter with Chesterfield at Gigg Lane.

Courtesy Chris Tofalos.

Below: The reason for Martin Dobson's smile is revealed as Joe Jabub's tremendous shot sails over the 'keeper and into the net.

Courtesy Bury Messenger.



LEAGUE TABLE – and round up

CANON LEAGUE DIVISION FOUR (as at Friday, 11th May, 1984)

	HOME					AWAY				
	P	W	D	L	F A	P	W	D	L	F A Pt.
York City.....	45	18	4	1	58 16	13	4	5	37	21 101
Bristol City.....	46	18	3	2	51 17	6	7	10	19	27 82
Doncaster Rovers	44	14	6	1	45 21	9	7	7	35	32 82
Reading.....	45	17	6	0	51 14	5	9	8	30	39 81
Aldershot.....	45	14	5	3	49 29	8	3	12	27	40 74
Blackpool.....	44	15	4	4	47 19	6	5	10	23	30 72
Colchester United	45	14	7	2	45 14	3	9	10	23	35 67
Peterborough Utd	45	14	5	3	51 16	3	9	11	20	32 65
Torquay United.....	45	12	7	3	31 18	5	6	12	27	46 64
Tranmere Rovers	44	10	5	7	32 26	6	10	6	19	22 63
Stockport County	45	12	5	6	34 25	5	6	11	26	38 62
Hereford United.....	45	10	6	6	29 20	5	9	9	23	32 50
Chesterfield.....	45	10	11	2	34 24	5	4	13	23	33 60
Crewe Alexandra.....	44	10	7	5	34 26	6	3	13	21	39 58
Swindon Town.....	45	11	7	5	34 23	4	6	12	23	31 58
BURY.....	45	8	7	7	32 31	6	7	10	27	32 56
Darlington.....	44	12	4	6	29 19	4	3	15	18	31 55
Northampton T.....	45	10	8	5	32 32	3	6	13	20	43 53
Mansfield Town.....	45	8	7	7	41 26	4	6	13	22	43 49
Rochdale.....	46	8	9	6	35 31	3	4	16	17	49 46
Halifax Town.....	45	10	6	6	32 24	1	6	16	19	64 45
Wrexham.....	43	5	6	10	25 30	4	8	10	24	40 41
Hartlepool United	44	7	7	8	28 25	2	2	18	15	57 36
Chester City.....	45	7	5	11	23 35	0	8	14	22	46 34

A.A. AWAY TRAVEL

We would like to thank the A.A. Home Touring Service Routes Department at Cheadle Hulme and Bristol for providing the routes to our away games this season.

First Team Appearances 1983/84

() = Sub.

	1983/84		Bury Career	
	App.	Goals	Apps.	Goals
Bramhall	44	6	99	12
Brown	27	—	99	—
Buckley	7 (1)	—	7 (1)	—
Butcher	11	—	11	—
Carrodus	31 (3)	1	31 (3)	1
Coleman	24 (5)	—	24 (5)	—
Cutler	7 (5)	2	7 (11)	2
Deacy	30 (1)	—	30 (1)	—
Dobson	9	—	9	—
Entwistle	34 (3)	11	58 (9)	18
Gardner	43	—	90	—
Hilton (G)	1	—	1	—
Hilton (P)	19	6	136 (12)	39
Jakub	45	10	162 (2)	18
Madden	45	10	193 (19)	91
Mountford	4	—	4	—
O'Keefe	2	—	2	—
Park	18 (3)	1	18 (3)	1
Pashley	39	—	39	—
Potts	18 (1)	1	45 (5)	6
Spence	9 (4)	1	149 (4)	45
White	28	1	28	1

ALNO
Built-in kitchens

Associated Companies:
Executive Windows (Est. 1982)
Bury Building Co. (Est. 1976)
The Natural Stone Facing Co. (Est. 1978)

QUALITY MADE TO MEASURE KITCHEN UNITS

- * Free Planning and Design tailored to fit your pocket.
 - * Walk and peruse at your leisure.
 - * Home Improvement Loans available. Details on request.
 - * No obligation quotations.
- Pine, Mahogany, Oak, Laminate,
AEG Appliances.



Country Kitchens

59 CROSTONS ROAD, BURY
TEL: 061-797 9636.

SHOWROOM OPEN
Monday–Friday, 9 am–5 pm
Saturday and Sunday, 10 am–4 pm

GIGG LANE GLEANINGS

IT'S JOE'S TROPHY

Congratulations go to this year's Player of the Season – Joe Jakub, who will be presented with his trophy at today's game. It certainly has been well deserved by Joe and to say it was a landslide decision by the supporters is no exaggeration. Winston White was placed second, while third was David Brown, fourth Paul Gardner, fifth Craig Madden and sixth Terry Pashley. While Joe's award is well deserved, two other players deserve a mention today, John Bramhall and David Brown will both be making their 100th league appearance for the Shakers today.

PROGRAMME

The programme team hope that you have enjoyed their efforts at providing an interesting read for supporters on a match day. We were hopeful of a good showing in the programme polls this season – but most programme clubs have decided not to rank programmes in merit order. 'Programme Monthly' reviewed the Shakers Review thus: (Colourful, most informative on club matters and had a nice balance of editorial and photographs! It also said that we had been playing around with our programme in recent seasons, that it was a throw-back to the early 70's programme (?) and that the advert content was too great. Can't win them all! Many thanks go to Mr. John Keal and John Beesley at UPS Blackpool Limited, our printers who have been helpful throughout the season along with the Bolton Evening News and Bury Messenger for the provision of photographs.

Regretably, despite a 40p cover price and promising early season sales, the slump in gates has hit programme sales hard, resulting in a loss overall. Serious thought must now be given to the format, quality and even the feasibility of producing a match day programme next season.

JUNIOR SHAKERS REVIEW

There are mixed reports on the three Junior soccer teams success rates in 83/84. The U12 team in their first season in the Radcliffe Sunday League finished 4th with today's mascot Alun Davies leading the scoring with 23 goals. The U13 team finished disappointingly next to bottom, while in the Bury Friendship League, the U16 team finished in a similar position.

Trials will be held at the end of June for anyone of school standard wishing to play for the U12 and U13 teams. Junior Shakers President Derek Spence will be casting his eye over all trialists and anyone interested should contact Ian Sharples, the J.S. Secretary on 061-761-3315.

SOCIAL CLUB F.C.

The Bury F.C. Social Club and Supporters Club team who compete in the Bury Sunday league are also on the lookout for new players. Anyone interested in playing should contact Adrian Stokes (Tel. 797-9794) or come and meet the lads at the Social Club next Sunday, 20th May at 12 noon. The team plays in an enjoyable competitive set-up, so if you fancy playing under the name of Bury F.C., please get in touch. The team also extends its gratitude to Don Hale for his hard work in getting the team off the ground last year.

TRAVEL REVIEW

The Travel Committee would like to thank everyone who has represented their club so admirably this season at away games. Behaviour has never once caused concern and once again transport has been arranged to every game – even to the late postponement at Hereford! Our thanks go once again to the Bury Times for their great assistance week after week, along with the drivers and staff of Warburtons travel.



Not this time, Craig!

Courtesy Bury Messenger.

Traa Dy Liooar

"Leave your hurries behind you"

SEND TODAY! For our new FREE Holiday Colour Brochure and Where to Stay Guide To: L. N. Kelly, Isle of Man Tourist Board, Douglas, Isle of Man. Phone Douglas (0624) 4323, 24-hour service. BEAUTIFUL ... THAT'S THE

Isle of Man
ALL OVER



TODAY'S MASCOT

Alun Davies aged 12 of 79 Marland Fold, Rochdale. Alun attends Roch Valley High School and his favourite player is Winston White.



TODAY'S V.I.P.'s

Darren Robinson
aged 10

Trevor Eckersley
aged 16

Roger Davies
aged 10

Darren Chadwick
aged 12

Tony's Teaser Answers

1. The Boys Stand at Gigg Lane!
2. Halifax Town and Wrexham.
3. 0-0 no scorers!
4. Manchester City, Preston and Chorley.
5. 1-c, 2-a, 3-e, 4-d, 5-b.
6. Winston White.

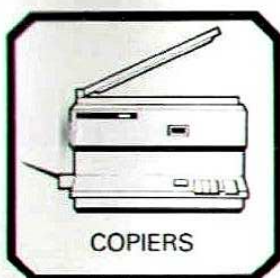
STATISTICS

FIXTURE

August	1	2	3	4	5	6	7	8	9	10	11	12
Sat. 27—Tranmere Rovers	Brown	Gardner	Pashley	Coleman	Hilton	Bramhall	Potts	Madden	Entwistle	Jakub	Carrodus	Jones
Tues. 30—Wigan Athletic (MC1, 1L)	Brown	Gardner	Pashley	Coleman	Hilton	Bramhall	Potts	Madden	Entwistle	Jakub	Carrodus	Spence
September												
Sat. 3—Bristol City	2,133	Gardner	Pashley	Coleman	Hilton	Bramhall	Potts	Madden-2	Entwistle	Jakub	Carrodus	Spence (7)
Tues. 6—Blackpool	3,071	Gardner	Pashley	Coleman	Hilton	Bramhall	Potts	Madden	Entwistle	Jakub	Carrodus	Spence (9)
Sat. 10—Aldershot	2,015	Gardner	Pashley	Coleman	Hilton	Bramhall	Potts	Madden	Entwistle	Jakub	Carrodus	Spence (3)
Tues. 13—Wigan Athletic (MC1, 2L)	2,993	Gardner	Pashley	Coleman	Hilton	Bramhall	Potts	Madden	Entwistle	Jakub	Carrodus	Spence (11)
Sat. 16—Hull City	1,908	Gardner	Pashley	Spence	Hilton	Bramhall	Potts	Madden	Entwistle	Jakub	Carrodus	Spence (4)
Sun. 18—Halifax Town	2,358	Gardner	Pashley	Coleman	Hilton	Bramhall	Potts	Madden	Entwistle	Jakub	Carrodus	Entwistle
Sat. 24—Doncaster Rovers	3,258	Gardner	Pashley	Coleman	Hilton	Bramhall	Potts	Madden	Entwistle	Jakub	Carrodus	Spence
Sat. 24—Darlington	2,777	Gardner	Pashley	Coleman	Hilton	Bramhall	Potts	Madden	Entwistle	Jakub	Carrodus	Entwistle
October												
Tues. 4—West Ham United (MC2, 1L)	1,654	Gardner	Pashley	Carrodus	Hilton	Bramhall	Potts	Madden	Spence	Jakub	Carrodus	Coleman (3)
Sat. 8—Mansfield Town	8,050	Gardner	Pashley	Carrodus	Hilton	Bramhall	Potts	Madden	Spence	Jakub	Carrodus	Coleman (3)
Tues. 11—Colchester United	2,468	Gardner	Pashley	Carrodus	Hilton	Bramhall	Potts	Madden	Spence	Jakub	Carrodus	Coleman (7)
Sat. 15—Wrexham	1,969	Gardner	Pashley	Carrodus	Hilton	Bramhall	Potts	Madden	Spence	Jakub	Carrodus	Coleman (8)
Tues. 18—West Ham United (MC2, 2L)	2,320	Gardner	Pashley	Carrodus	Hilton	Bramhall	Potts	Madden	Spence	Jakub	Carrodus	Potts
Sat. 25—Hartlepool United	10,896	Gardner	Pashley	Carrodus	Hilton	Bramhall	Potts	Madden	Spence	Jakub	Carrodus	Potts
November												
Tues. 1—Stockport County	1,125	Gardner	Pashley	Carrodus	Hilton	Bramhall	Potts	Madden	Spence	Jakub	Carrodus	Potts
Sat. 5—Torquay United	2,547	Gardner	Pashley	Carrodus	Hilton	Bramhall	Potts	Madden	Spence	Jakub	Carrodus	Potts
Sun. 13—Crewe Alexandra	1,330	Gardner	Pashley	Carrodus	Hilton	Bramhall	Potts	Madden	Spence	Jakub	Carrodus	Potts
Sat. 19—Boston United (F.A. Cup 1)	3,078	Gardner	Pashley	Carrodus	Hilton	Bramhall	Potts	Madden	Spence	Jakub	Carrodus	Potts
Sat. 26—Reading	2,624	Gardner	Pashley	Carrodus	Hilton	Bramhall	Potts	Madden	Spence	Jakub	Carrodus	Potts
Tues. 29—Peterborough United	2,220	Gardner	Pashley	Carrodus	Hilton	Bramhall	Potts	Madden	Spence	Jakub	Carrodus	Potts
December												
Sat. 3—Chester City	2,013	Gardner	Pashley	Carrodus	Hilton	Bramhall	Potts	Madden	Spence	Jakub	Carrodus	Potts
Sat. 10—Scunthorpe Utd. (F.A. Cup 2)	1,341	Gardner	Pashley	Carrodus	Hilton	Bramhall	Potts	Madden	Spence	Jakub	Carrodus	Potts
Sat. 17—Swindon Town	3,246	Gardner	Pashley	Carrodus	Hilton	Bramhall	Potts	Madden	Spence	Jakub	Carrodus	Potts
Mon. 26—Rochdale	3,551	Gardner	Pashley	Carrodus	Hilton	Bramhall	Potts	Madden	Spence	Jakub	Carrodus	Potts
Tues. 27—Chesterfield	4,096	Gardner	Pashley	Carrodus	Hilton	Bramhall	Potts	Madden	Spence	Jakub	Carrodus	Potts
Sat. 31—York City	4,196	Gardner	Pashley	Carrodus	Hilton	Bramhall	Potts	Madden	Spence	Jakub	Carrodus	Potts
January												
Mon. 2—Northampton Town	3,864	Gardner	Pashley	Carrodus	Hilton	Bramhall	Potts	Madden	Spence	Jakub	Carrodus	Potts
Wed. 18—Hereford United	2,525	Gardner	Pashley	Carrodus	Hilton	Bramhall	Potts	Madden	Spence	Jakub	Carrodus	Potts
Sat. 21—Halifax Town	2,013	Gardner	Pashley	Carrodus	Hilton	Bramhall	Potts	Madden	Spence	Jakub	Carrodus	Potts
Tues. 31—Bristol City	1,728	Gardner	Pashley	Carrodus	Hilton	Bramhall	Potts	Madden	Spence	Jakub	Carrodus	Potts
February												
Sat. 4—Peterborough United	2,507	Gardner	Pashley	Carrodus	Hilton	Bramhall	Potts	Madden	Spence	Jakub	Carrodus	Potts
Tues. 7—Tranmere Rovers	1,502	Gardner	Pashley	Carrodus	Hilton	Bramhall	Potts	Madden	Spence	Jakub	Carrodus	Potts
Sat. 11—Doncaster Rovers	2,400	Gardner	Pashley	Carrodus	Hilton	Bramhall	Potts	Madden	Spence	Jakub	Carrodus	Potts
Mon. 13—Stockport County	2,281	Gardner	Pashley	Carrodus	Hilton	Bramhall	Potts	Madden	Spence	Jakub	Carrodus	Potts
Sat. 18—Hartlepool United (F.A. Cup 5)	1,565	Gardner	Pashley	Carrodus	Hilton	Bramhall	Potts	Madden	Spence	Jakub	Carrodus	Potts
Sat. 25—Wrexham	1,874	Gardner	Pashley	Carrodus	Hilton	Bramhall	Potts	Madden	Spence	Jakub	Carrodus	Potts
March												
Sat. 3—Colchester United	1,576	Gardner	Pashley	Carrodus	Hilton	Bramhall	Potts	Madden	Spence	Jakub	Carrodus	Potts
Tues. 6—Blackpool	1,329	Gardner	Pashley	Carrodus	Hilton	Bramhall	Potts	Madden	Spence	Jakub	Carrodus	Potts
Sat. 10—Crewe Alexandra (F.A. Cup 6)	2,405	Gardner	Pashley	Carrodus	Hilton	Bramhall	Potts	Madden	Spence	Jakub	Carrodus	Potts
Sat. 17—Mansfield Town	1,673	Gardner	Pashley	Carrodus	Hilton	Bramhall	Potts	Madden	Spence	Jakub	Carrodus	Potts
Sat. 24—Hereford United	1,497	Gardner	Pashley	Carrodus	Hilton	Bramhall	Potts	Madden	Spence	Jakub	Carrodus	Potts
Sun. 25—Milk Cup Final		Gardner	Pashley	Carrodus	Hilton	Bramhall	Potts	Madden	Spence	Jakub	Carrodus	Potts
April												
Sun. 1—Darlington	1,255	Gardner	Pashley	Carrodus	Hilton	Bramhall	Potts	Madden	Spence	Jakub	Carrodus	Potts
Sat. 7—Blackpool	4,513	Gardner	Pashley	Carrodus	Hilton	Bramhall	Potts	Madden	Spence	Jakub	Carrodus	Potts
Sat. 14—Chester City (F.A. Cup S.F.)	1,413	Gardner	Pashley	Carrodus	Hilton	Bramhall	Potts	Madden	Spence	Jakub	Carrodus	Potts
Sat. 20—Rochdale	2,027	Gardner	Pashley	Carrodus	Hilton	Bramhall	Potts	Madden	Spence	Jakub	Carrodus	Potts
Mon. 23—Chesterfield	1,616	Gardner	Pashley	Carrodus	Hilton	Bramhall	Potts	Madden	Spence	Jakub	Carrodus	Potts
Sat. 28—Reading	4,307	Gardner	Pashley	Carrodus	Hilton	Bramhall	Potts	Madden	Spence	Jakub	Carrodus	Potts
May												
Tues. 1—Aldershot	1,231	Gardner	Pashley	Carrodus	Hilton	Bramhall	Potts	Madden	Spence	Jakub	Carrodus	Potts
Sat. 5—Northampton Town	1,096	Gardner	Pashley	Carrodus	Hilton	Bramhall	Potts	Madden	Spence	Jakub	Carrodus	Potts
Mon. 7—York City	8,023	Gardner	Pashley	Carrodus	Hilton	Bramhall	Potts	Madden	Spence	Jakub	Carrodus	Potts
Sat. 12—Swindon Town		Gardner	Pashley	Carrodus	Hilton	Bramhall	Potts	Madden	Spence	Jakub	Carrodus	Potts
Sat. 19—F.A. Cup Final		Gardner	Pashley	Carrodus	Hilton	Bramhall	Potts	Madden	Spence	Jakub	Carrodus	Potts

() = PLAYER SUBSTITUTED. GOALSCORERS IN BOLD. OWN GOALS v. HALIFAX TOWN AND WREXHAM.

Canon



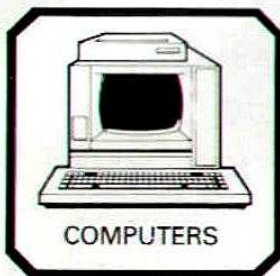
COPIERS



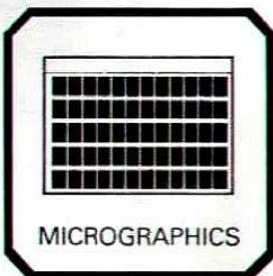
CAMERAS



TYPEWRITERS



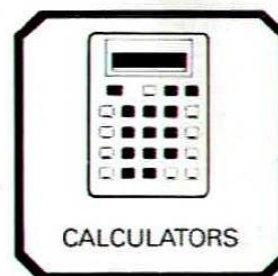
COMPUTERS



MICROGRAPHICS



COPYPHONES



CALCULATORS

The Canon Touch

Welcome to the Canon League.

This exciting new venture in British sporting history is well under way. It brings a new dimension to football.

In sporting history, Britain will be remembered for creating football, one of the most exciting and popular sports in the world.

With its international status, Britain's national sport now boasts a partnership with one of the world's leading manufacturers of cameras and business machines.

Canon has a long-standing tradition of involvement with the international sporting community – backed by a well-earned reputation for quality and reliability as a manufacturer of cameras and copiers.

Canon expertise in precision optics and electronics extends to other areas as well: Calculators, Copyphones, Computers, Typewriters and Micrographics.

Canon products are designed to make work more productive and leisure more exciting! The Canon tradition coupled with the excitement of football – a winning combination!

We hope you enjoy today's game.

Canon (UK) Limited, Waddon House, Stafford Road, Croydon CR9 4DD.

PRINTERS TO THE SPORTING WORLD

UPS BLACKPOOL LTD.

STANLEY ROAD, BLACKPOOL . . . Telephone: 22351

LOCAL AGENT:
HINDLEY PRESS
REAR 10 CARR ST.,
HINDLEY, WIGAN
TEL: 55170

BURY

White Shirts, Blue Shorts



1. David BROWN
2. Paul GARDNER
3. Terry PASHLEY
4. Frank CARRODUS
5. John BRAMHALL
6. Martin DOBSON
7. Winston WHITE
8. Craig MADDEN
9. Wayne ENTWISTLE
10. Joe JAKUB
11. Gary BUCKLEY

Sub.

SWINDON TOWN

Red Shirts, White Shorts



1. Scott ENDERSBY
2. Charlie HENRY
3. Colin BAILIE
4. Paul BATTY
5. Simon GIBSON
6. Mike GRAHAM
7. Dave HOCKADAY
8. Bob WOODRUFF
9. Jim QUINN
10. Alan MAYES
11. Leigh BARNARD

Sub.

Referee: J. LOVATT (Crewe)

Commenced refereeing in 1962 and progressed via Mid-Cheshire and Cheshire County to Football League List. Has lined an F.A. Cup Semi-Final (1975), and F.A. Youth Cup Final (1979), Anglo-Scottish Final (1979). Refereed Cheshire County Challenge Cup Final (1979), and lined 1980 Under 21 International Holland v. Spain.

A married man with two children he is an Office Manager with the Cheshire County Council. He is interested in all sports and enjoys a game of squash or tennis. He is actively involved in the administration of local football and coaching referees.

Linesmen: T. S. BERRY (Red Flag)

T. A. MOORE (Yellow Flag)

Today's Match Ball Sponsor:

**ASHWORTH BUILDING SERVICES,
220 ST. GEORGES ROAD, BOLTON**

**THANKS FOR YOUR
ATTENDANCE TODAY
— AND THROUGHOUT THE
83/84 SEASON**

BOLTON

EVENING

NEWS

Follow the Shakers in the

Bolton Evening News —

tops for sports coverage